



Notice to Fish Harvesters

2021 - Conservation Harvesting Plan for the herring fall fishery (fall spawners component) of the southern Gulf of St. Lawrence

MONCTON, NB – August 19, 2021 – Fisheries and Oceans Canada (DFO) announces the Conservation and Harvesting Plan (CHP) for the herring fall fishery (fall spawners component) of the southern Gulf of St. Lawrence for Herring Fishing Areas (HFAs) 16A to 16G and 17.

The Total Allowable Catch (TAC) is 12,000 t for 2021. In order to maximize fishing opportunity and provide a high probability of attaining the TAC, an additional 6,000 t are distributed according to existing shares; however, the fishery will be closed once the TAC of 12,000 t is captured. This approach was also employed in 2020.

Fleet allocations established (metric tonnes) in order to reach catches of 12,000 t

| Fleet | 2021 |
|------------------------------|--------|
| Inshore fleet Areas 16A-16G | 13,692 |
| Inshore fleet in Area 17 | 180 |
| Gulf large purse seine fleet | 4,128 |

Inshore fleet quota distribution (metric tonnes) for HFAs 16A to 16G and 17

| Herring Fishing Area | 2021 |
|----------------------------------|---|
| Reserve (initially distributed)* | 1,005 |
| | Basic allocation including the distribution of reserve |
| 16A | 22 |
| 16B | 6,509 |
| 16C | 2,662 (C&E) |
| 16D | 90 |
| 16E | see above |
| 16F | 2,734 |
| 16G | 1,818 |
| 17 | 180 |

* The rules for the distribution of the reserve are provided in Appendix 1.

2021– CONSERVATION HARVESTING PLAN FOR THE HERRING FALL FISHERY (fall spawners component)

VESSELS USING FIXED GEAR

This Conservation Harvesting Plan (CHP) applies to all herring licence holders using fixed gear and vessels less than 19,82 meters (65 feet) in Herring Fishing Areas (HFAs) 16A through 16G.

Dates and times presented in this document are based on Atlantic Daylight Time (ADT).

Current management measures

- Tagging of all gillnets in all HFAs is required.
- Any quota overrun in a given year, either within an individual quota regime or in a competitive fishery, is reconciled against the quota of the following season.
- A summary of the management measures is provided in Table 1.

Herring Fishing Area 16A – Île Verte

Monitoring: It is mandatory for all licence holders to report their catch prior to arrival at the dock (hail-in). Dockside monitoring coverage is 25 per cent.

Fishing season: July 1 to December 31

Allocation: **22 tonnes**

Fishing gear: Gillnets limited to 150 fathoms in length and 125 meshes in depth with a maximum mesh size of 63.5mm.

Daily or weekly closure: None

Catch limit: One landing per day with a maximum daily catch limit of 9,072 kg.

Herring Fishing Area 16B – Baie des Chaleurs

Monitoring: It is mandatory for all licence holders to report their catch prior to arrival at the dock (hail-in). In New Brunswick the dockside monitoring coverage is 100 per cent. In Quebec, the dockside monitoring coverage is 25 per cent.

Fishing season: August 29 to December 31

Allocation: **6,509 tonnes**

Fishing gear: Gillnets limited to 125 fathoms in length and 125 mesh in depth with a maximum mesh size of 66.7 mm. A maximum of only one (1) net hanging will be permitted.

Daily and weekly closures: Daily closures from 1:00 p.m. to 7:00 p.m. Weekly closure from 1:00 p.m. on Friday to 7:00 p.m. on Sunday. No netting is permitted in the water during these closures.

Catch limit: Only one landing per day is allowed with a maximum daily catch limit of 10,206 kg or self-managed by industry for pilot project participants.

Herring Fishing Areas 16C & 16E

Monitoring: It is mandatory for all licence holders to report their catch prior to arrival at the dock (hail-in). Dockside monitoring coverage is 100 per cent.

Fishing season: September 5 to December 31

Allocation: **2,662 tonnes**

The fishery will start with an allocation of 399 tonnes for both groups A and B. When this quota is reached, the remaining allocation will be divided equally between Group A (New Brunswick fishers) and Group B (Prince Edward Island and Nova Scotia fishers). Any excess quota caught will be deducted from the respective quota groups A or B.

Fishing gear: Gillnets limited to 150 fathoms in length and 125 meshes in depth with a maximum mesh size of 66.7 mm.

Daily or weekly closure: Daily closure from 11:00 a.m. to 7:00 p.m. Weekly closure from 11:00 a.m. on Friday to 7:00 p.m. on Sunday. No netting is allowed in the water during these closures.

Catch limit: Only one landing per day is permitted with a maximum catch limit of 9,752 kg or industry self-managed for Group A pilot project participants.

Herring Fishing Area 16D

Monitoring: It is mandatory for all licence holders to report their catch prior to arrival at the dock (hail-in). Dockside monitoring coverage is 25 per cent.

Fishing season: July 1 to December 31

Allocation: **90 tonnes.**

Fishing gear: Gillnets limited to 150 fathoms in length and 125 mesh in depth with a maximum mesh size of 66.7mm.

Daily or weekly closure : None

Catch limit: None

Herring Fishing Area 16F

Monitoring: It is mandatory for all licence holders to report their catch prior to arrival at the dock (hail-in). Dockside monitoring coverage is 100 per cent.

Fishing season: To be determined

Allocation: **2,734 tonnes**

Fishing gear: Gillnets limited to 100 fathoms in length and 125 meshes in depth with a maximum mesh size of 66.7 mm.

Daily or weekly closure: Daily closure from 12:00 p.m. to 6:00 p.m.. Weekly closure from 12:00 p.m. on Friday to 6:00 p.m. on Sunday. No netting is allowed in the water during these closures.

Catch limit: Only one landing per day is permitted with a maximum catch limit that is self-managed by the industry.

Herring Fishing Area 16G (south and north part – see Chart 1)

Monitoring: It is mandatory for all licence holders to report their catch prior to arrival at the dock (hail-in). Dockside monitoring coverage is 100 per cent.

Fishing season: July 13 to October 8

Allocation: **1,818 tonnes**

Fishing gear: Gillnets limited to 150 fathoms in length and 125 meshes in depth with a maximum mesh size of 66.7 mm.

Weekly closure: Weekly closure from 3:00 p.m. on Friday to 3:00 p.m. on Sunday. No netting is permitted in the water during the closure periods.

Catch limit: A maximum of two landings per day are permitted depending on the fishing area with a maximum self-directed catch limit by the industry of 4,536 kg.

2021– CONSERVATION HARVESTING PLAN FOR THE HERRING FALL FISHERY (fall spawners component)

VESSELS USING MOBILE GEAR (PURSE SEINE)

This Conservation Harvesting Plan (CHP) applies to all herring licence holders using purse seine in the Northwest Atlantic Fisheries Organization (NAFO) Division 4T herring fishery.

VESSELS LESS THAN 19,81 METRES

Current management measures

- The logbook is mandatory and must be completed on each fishing day.
- The purse seine fishery is subject to the small fish protocol.
- Any quota overrun in a given year, either within an individual quota regime or in a competitive fishery, is reconciled against the following season's quota.
- A summary of the management measures for the small seiners is provided in Table 1.

Fishing season: July 1 to December 31.

Fishing restrictions: From January 1 to December 31, fishing is prohibited west of the line between Grande-Anse, New Brunswick and Paspébiac, Quebec (see Chart 2).

From August 1 to 31, fishing is prohibited in the Baie des Chaleurs (see Chart 2).

Allocation: **189 tonnes**.

VESSELS GREATER THAN 19,81 METERS

Current management measures

- All vessels must be equipped with an operational Vessel Monitoring System (VMS) during all fishing activities.
- The minimum sampling coverage of the At-Sea Observer Program is 20 per cent.
- The logbook is mandatory and must be completed on each fishing day.
- The purse seine fishery is subject to the small fish protocol.
- Any quota overrun in a given year, either within an individual quota regime or in a competitive fishery, is reconciled against the following season's quota.

New management measures in 2021

- The percentage of the spring and fall spawning component will be monitored for each fishing trip using a scientific protocol to determine catch composition (see Annex 2).
- When spring herring bycatch reaches the **115.6 t** allocation; the spring and fall fishery will be closed to the fleet of vessels greater than 19,81 metres using mobile gear.

Spring fishing season: May 1 to June 31

Fishing activities are authorized only in the northern part of HFA 16D. These fishing grounds are called the *Edge* (see Chart 3).

Summer and fall fishing season: July 1 to December 31

Fishing restrictions : From January 1 to December 31, fishing is prohibited in portion of Herring Fishing Area 16G off the northeast coast of Prince Edward Island (see Chart 4).

From January 1 to December 31, fishing is prohibited west of the line between Grande-Anse, New Brunswick and Paspébiac, Quebec (see Chart 2).

From August 1 to 31, fishing is prohibited inside Baie des Chaleurs (see Chart 2).

Allocation fall spawners: **4,128 t.**

A cap of 50 per cent of the fall spawners allocation (**2,064 t**) is allowed to be caught inside the Baie des Chaleurs.

Allocation spring spawners: **115.6 t.**

Allocation of spring and fall spawners

| Component | Allocation (t) | Inside Baie des Chaleurs (t) | Outside Baie des Chaleurs (t) |
|-----------|----------------|------------------------------|-------------------------------|
| Spring | 115.6 | N/A | N/A |
| Fall | 4,128 | 2,064 | 2,064 |

Herring Fishing Area 17

Fishing season: Begins November 1.

Access to Herring Fishing Area 17 (northern portion of 4Vn) will be available as of November 1. Total Allowable Catch and fishing conditions will be subject to guidelines under the Maritimes Region herring management plan.

FOR MORE INFORMATION :

Ben Moore
Resource Management
Fisheries and Oceans Canada
Charlottetown, PE
(902) 370-7094

Mario Gaudet
Resource Management
Fisheries and Oceans Canada
Moncton, NB
(506) 395-7705

Alan Dwyer
Resource Management
Fisheries and Oceans Canada
Antigonish, NS
(902) 735-7114

Caroline Leclerc
Resource Management
Fisheries and Oceans
Gaspé, QC
(418) 368-5559

Josée Richard
Resource Management
Fisheries and Oceans
Cap-aux-Meules, QC
(418) 986-2095

David Giard
Resource Management
Fisheries and Oceans Canada
Moncton, NB
(506) 851-6494

Antoine Rivier
Resource Management
Fisheries and Oceans Canada
Québec, QC
(418) 640-2636

TABLE 1
2021 – Management measures for the fall herring fishery of the inshore fleet

| Fishing Area | DMP/CMP* | Quota (t) | Period | Net (mesh size / depth / length) | Closures | Trip Limit |
|---|---|------------------|--|--------------------------------------|---|--|
| 16A – Île Verte | CMP - declaration of 100% of catches through the radio and dockside verification for 25% of landings | 22 | July 1 – Dec. 31 | 63.5 mm min / 125 mesh / 150 fathoms | None | One landing a day of 9,072 kg (20,000 lbs) |
| 16B – Baie des Chaleurs (Fixed Gear) | 100% DMP in N.B. | 185 ¹ | July 1-31 | 66.7 mm min / 125 mesh / 125 fathoms | None | One landing per day of 10,206 kg (22,500 lbs) |
| | CMP in P.Q. - declaration of 100% of catches through the radio and dockside verification for 25% of landings | 6,135 | August 29 - December 31 | | 13:00 Friday to 19:00 Sunday 13:00 to 19:00 weekdays | One landing per day, 10,206 kg (22,500 lbs) or daily limit self-managed by industry |
| Small seiners | 100% DMP | 189 | July 1 – July. 31 Sept. 1 – Dec. 31 | N/A | N/A | N/A |
| 16 C&E –Escuminac, Western PEI and northern GNS | 100% DMP | 257 ² | July 1 – Aug. 20 | 66.7 mm min / 125 mesh / 150 fathoms | 18:00 Friday to 18:00 Sunday | One landing per day of 5,670 kg (12,500 lbs) |
| | | 399 (all) | September 5 – December 31 | | 11:00 Friday to 19:00 Sunday 11:00-19:00 weekdays | Maximum daily limit of 9,752 kg (21,500 lbs) or daily limit self-managed by industry (for Group A) |
| | | 1,003 (Group A) | After competitive fishery | | | |
| | | 1,003 (Group B) | After competitive fishery | | | |
| 16D –Magdalen Islands | CMP - logbook, declaration of 100% of catches through the radio and dockside verification for 25% of landings | 90 | July 1 – Dec. 31 | 66.7 mm min / 125 mesh / 150 fathoms | None | None |
| 16F – Pictou | 100% DMP | 25 | July 4 – August 20 | 66.7 mm min / 125 mesh / 100 fathoms | 18:00 Friday to 18:00 Sunday | One landing per day, with daily limit self-managed by industry |
| | | 2,709 | TBD | 66.7 mm min / 125 mesh / 100 fathoms | 12:00 Friday to 18:00 Sunday 12:00 to 18:00 weekdays | One landing per day, with daily limit self-managed by industry |

| Fishing Area | DMP/CMP* | Quota (t) | Period | Net (mesh size / depth / length) | Closures | Trip Limit |
|-----------------------------------|----------|---|--------------------------------------|--|---------------------------------|---|
| 16G – North side (see Chart 1) | 100% DMP | 448 for North and south | Summer fishery July 13 – Sept. 3 | 66.7 mm min / 125 mesh / 150 fathoms | 15:00 Friday to 15:00 Sunday | Maximum 2 landings per day, with daily limit self-managed by industry |
| | | Remaining of summer fishery + roe quota x 20% | Main roe fishery Sept. 5 – Oct. 8 | | | Maximum 2 landings per day, with daily and weekly limit self- managed by industry |
| 16G – South side | 100% DMP | 448 for North and south | Summer fishery July 13 – Sept. 3 | 66.7 mm min / 100 mesh / 150 fathoms | 15:00 Friday to 15:00 Sunday | Maximum 2 landings per day, with daily limit self-managed by industry |
| | | Remaining of summer fishery + roe quota x 80% | Main roe fishery Sept. 5 – Oct. 8 | | | Maximum 2 landings per day, with daily and weekly limit self- managed by industry |

* DMP = dockside monitoring program / CMP = catch monitoring program

1 – If any quota remains from the early fishery, the remainder will be added to the roe fishery.

2 – Only portion of 16E is open. Fish caught in that portion of 16E must be landed in that open area.

ANNEX 1
2021 – Fall reserve distribution rules based on the sharing plan

1. Each HFA will maintain its existing quota share at the end of the sharing plan.
2. Establishment of a reserve of 1,005 tonnes consisting of 80 per cent of HFA 16A's allocation, 80 per cent of HFA 16D's allocation, 80 per cent of HFA 17's allocation* and 18.548 per cent of HFA 16G's allocation (*HFA 17 will provide 80 per cent of its allocation (100 tonnes) on a risk management basis to populate the reserve)
3. The 1,005 tonnes reserve will initially be allocated equally to HFAs 16C and 16E (502 tonnes) and 16F (502 tonnes).
4. The initial allocation of the reserve will be evaluated annually to take conservation concerns into consideration.
5. If the allocation for HFA 16A, 16D or 16G is no longer sufficient, due to an apparent increase in abundance, there will be a revision of the sharing scenario.

FALL - SHARE SCENARIO BASED ON ESTABLISHMENT OF A RESERVE

(2021 FIXED GEAR QUOTA = 13,692 t) TAC 12,000 t

Reserve=1,005 t

| HFA | CURRENT SHARE | Quota based on current shares (t) | Area reduction for the 1,005 t reserve | Quota after deduction of 1,005 t reserve | Distribution of the reserve 1,005 t | Basic allocation |
|--------------|---------------|-----------------------------------|--|--|-------------------------------------|------------------|
| 16A | 0.79% | 108 | 87 | 22 | | 22 |
| 16B | 47.54% | 6,509 | | 6,509 | | 6,509 |
| 16C&E | 15.77% | 2,159 | | 2,159 | 502 | 2,662 |
| 16D | 3.29% | 450 | 360 | 90 | | 90 |
| 16F | 16.30% | 2,232 | | 2,232 | 502 | 2,734 |
| 16G | 16.30% | 2,232 | 414 | 1,818 | | 1,818 |
| 17 | 0% | 180 | 144* | 180 | | 180 |
| TOTAL | 100% | 13,871 | 1,005 | | 1,005 | 14,015 |

*Risk managed

ANNEX 2

SCIENTIFIC PROTOCOL TO IDENTIFY THE SPRING SPAWNER COMPONENT DURING THE HERRING FALL FISHERY

The following biological sampling of herring is required for each landing by the Gulf purse seine fleet during the fall fishery:

- 1) A total of at least 200 herrings, randomly selected, must be sampled for each trip.
- 2) In the event no DFOs port samplers are available to collect the fish at landing, all the herring samples taken should be placed in a few well identified plastic bags then inside a sample box. Requested information must be recorded directly on the box. Each box should be frozen as quickly as possible and stored.
- 3) All pertinent information, such as the vessel name, date and time of the catch, fishing area, and especially the position coordinates (latitude /longitude) where the herring was caught must be provided.
- 4) If a port sampler is available, DFO is responsible for transporting the samples to the Gulf Fishery Centre in Moncton (GFC). Otherwise, the fishers will be responsible for shipping the frozen samples to the GFC.
- 5) A logbook form must be filled out for each trip.

FOR MORE INFORMATION PLEASE CONTACT:

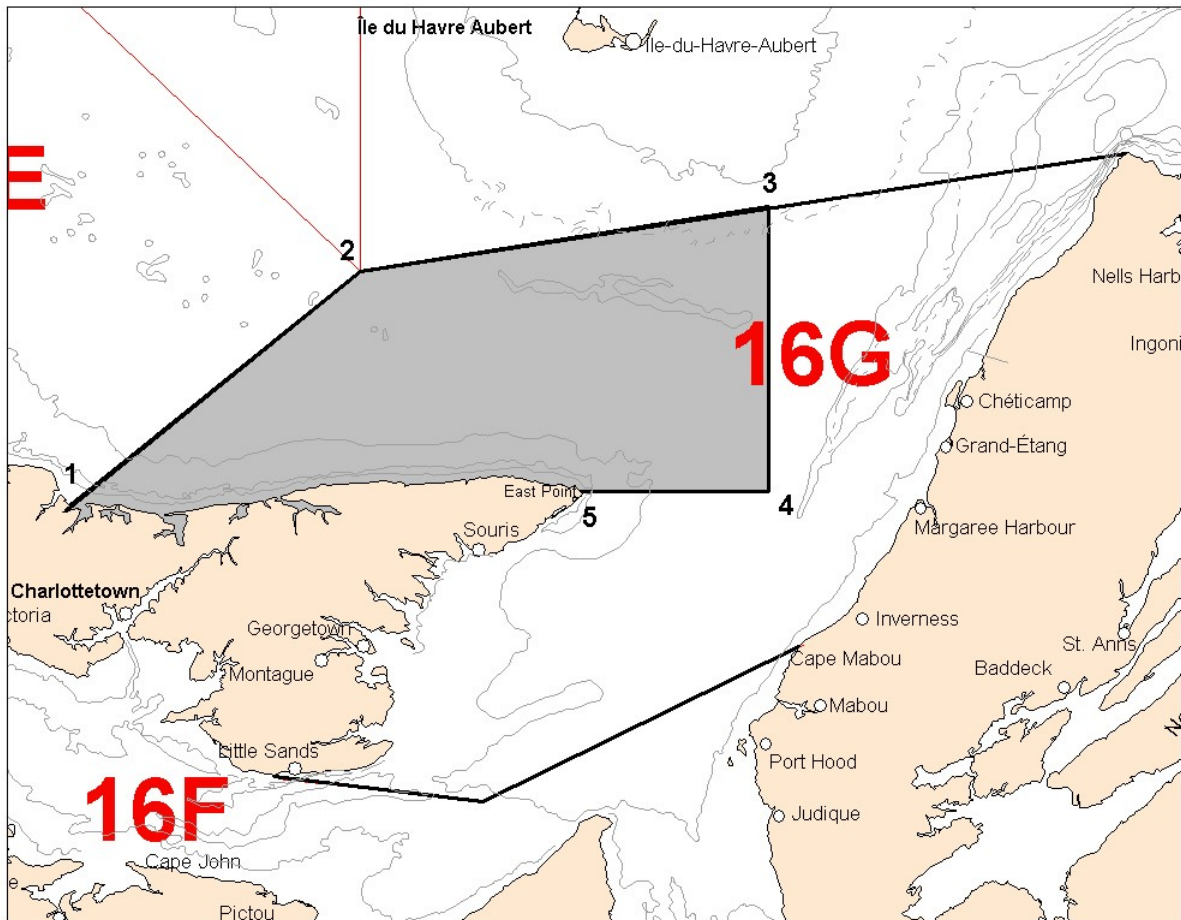
Nicolas Rolland

EMAIL: nicolas.rolland@dfo-mpo.gc.ca

TEL: 506-871-6138

CHART 1

Northern part of HFA 16G



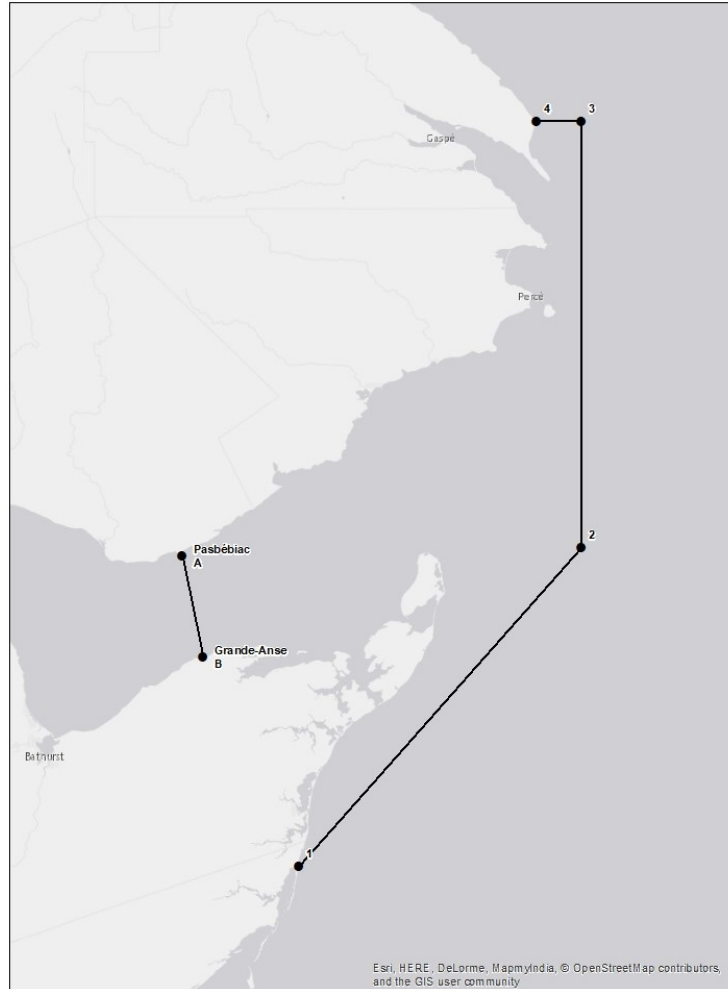
The Northern portion of HFA 16G defined as the waters enclosed by the coastline and rhumb lines (similar to straight lines drawn on a nautical chart) joining the following points in the order in which they are listed:

1. 46° 26' 00" N - 63° 15' 00" W
2. 46° 50' 00" N - 62° 32' 00" W
3. 46° 56' 42" N - 61° 30' 00" W
4. 46° 26' 55" N - 61° 30' 00" W
5. 46° 26' 55" N - 61° 58' 25" W (EAST POINT)

Note: When the geographic boundary of an area is expressed in latitude and longitude, these point references are based on the geodesic system North American Datum 1927 (NAD27). The positions are expressed in degrees, minutes and seconds.

CHART 2

Line from Grande-Anse to Paspébiac and the Baie des Chaleurs boundary line



Definition of the line from Grande-Anse to Paspébiac

Between January 1 and December 31, it is prohibited to fish herring with a vessel using purse seine in the waters enclosed by the coastline and rhumb lines (similar to straight lines drawn on a nautical chart) joining the following points in the order in which they are listed:

| Points | Latitude North | Longitude West |
|--------|----------------|----------------|
| A. | 48°01'00" N | 65°14'40" O |
| B. | 47°49'00" N | 65°11'00" O |

Note: When the geographic boundary of an area is expressed in latitude and longitude, these point references are based on the geodesic system North American Datum 1927 (NAD27). The positions are expressed in degrees, minutes and seconds.

Definition of inside the Baie des Chaleurs

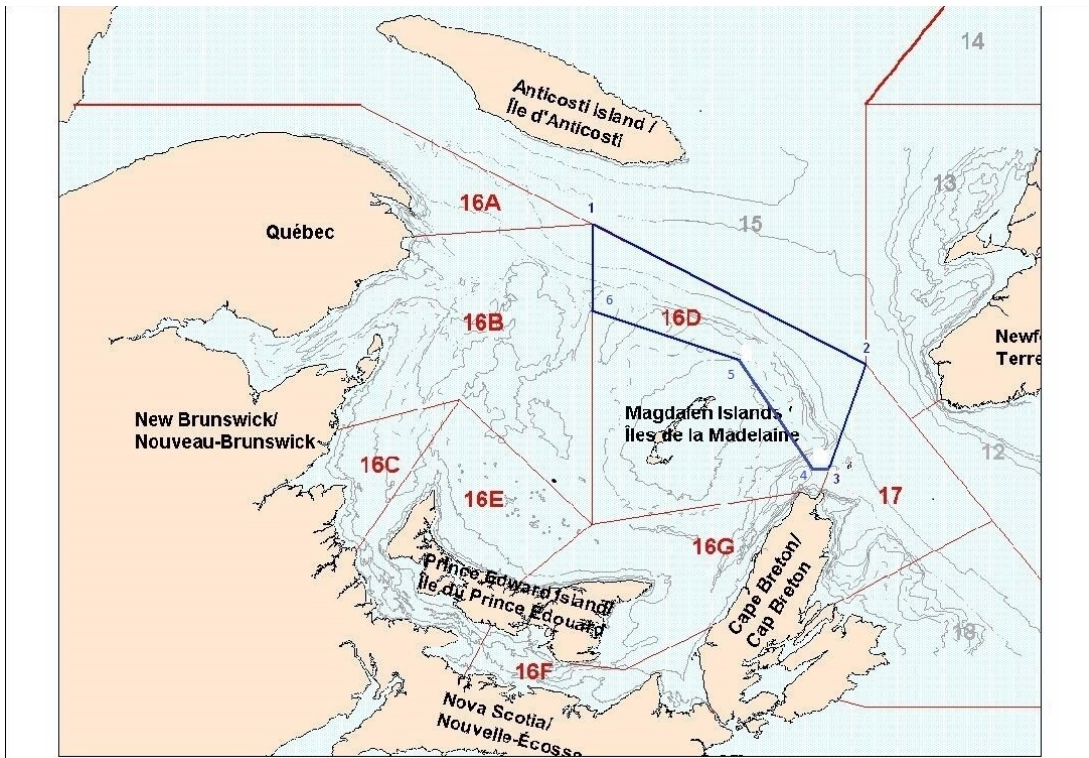
Inside the Baie des Chaleurs is defined as the waters enclosed by the coastline and rhumb lines (similar to straight lines drawn on a nautical chart) joining the following points in the order in which they are listed:

| Points | Latitude North | Longitude West |
|---------------|-----------------------|-----------------------|
| 1. | 47°24'00" N | 64°54'00" O |
| 2. | 48°02'00" N | 64°04'00" O |
| 3. | 48°52'00" N | 64°04'00" O |
| 4. | 48°52'00" N | 64°12'00" O |

Note: When the geographic boundary of an area is expressed in latitude and longitude, these point references are based on the geodesic system North American Datum 1927 (NAD27). The positions are expressed in degrees, minutes and seconds.

CHART 3

Northern portion of Herring Fishing Area 16D named the *Edge* (area in blue).



Definition of the northern portion of Herring Fishing Area 16D named the *Edge*

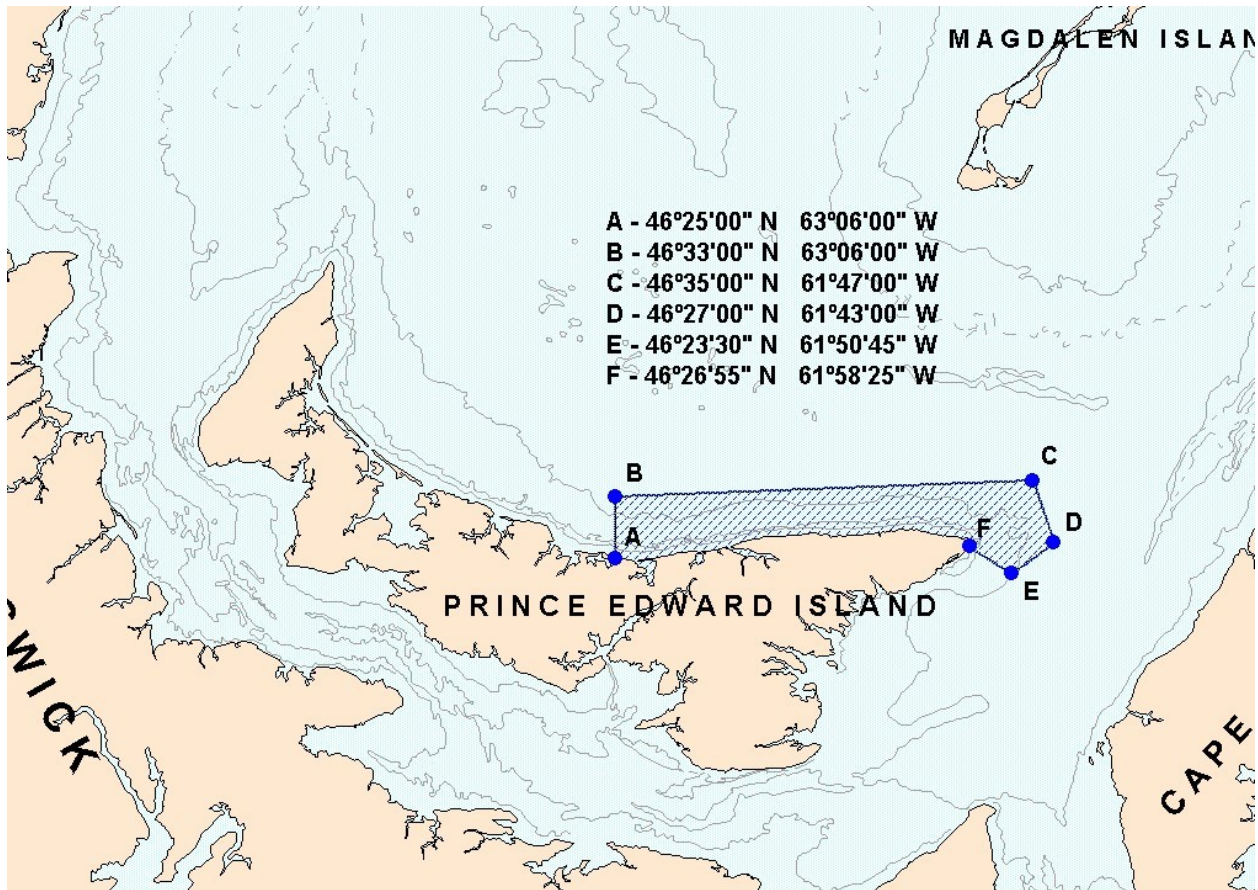
During the period **May 1 to June 30**, purse seine fishing is restricted to the waters enclosed by rhumb lines (similar to straight lines drawn on a nautical chart) joining the following points in the order they are listed:

| Points | Latitude north | Longitude west |
|--------|----------------|----------------|
| 1. | 48°42'00"N | 62°32'00"W |
| 2. | 47°50'00"N | 60°00'00"W |
| 3. | 47°11'06"N | 60°20'07"W |
| 4. | 47°11'06"N | 60°35'52"W |
| 5. | 47°51'33"N | 61°10'07"W |
| 6. | 48°09'33"N | 62°32'02"W |

Note: When the geographic boundary of an area is expressed in latitude and longitude, these point references are based on the geodesic system North American Datum 1927 (NAD27). The positions are expressed in degrees, minutes and seconds.

CHART 4

Closure of the herring fishery off northeast PEI to the inshore fixed gear fleet (April 1 to June 30) and to the purse seine fleet (January 1 to December 31)



Definition of the closed portion of Herring Fishing Area 16G

This portion of HFA 16 is closed to herring fishing from April 1st to June 30th to vessels using fixed gear and from January 1st to December 31st to vessels using a purse seine. This portion of HFA16G is defined as the waters enclosed by the coastline and rhumb lines (similar to straight lines drawn on a nautical chart) connecting the following points in the order they are listed below:

| Points | Latitude north | Longitude west |
|--------|----------------|----------------|
| 1 | 46°25'00" N | 63°06'00" O |
| 2 | 46°33'00" N | 63°06'00" O |
| 3 | 46°35'00" N | 61°47'00" O |
| 4 | 46°27'00" N | 61°43'00" O |
| 5 | 46°23'30" N | 61°50'45" O |
| 6 | 46°26'55" N | 61°58'25" O |

Note: When the geographic boundary of an area is expressed in latitude and longitude, these point references are based on the geodesic system North American Datum 1927 (NAD27). The positions are expressed in degrees, minutes and seconds.